

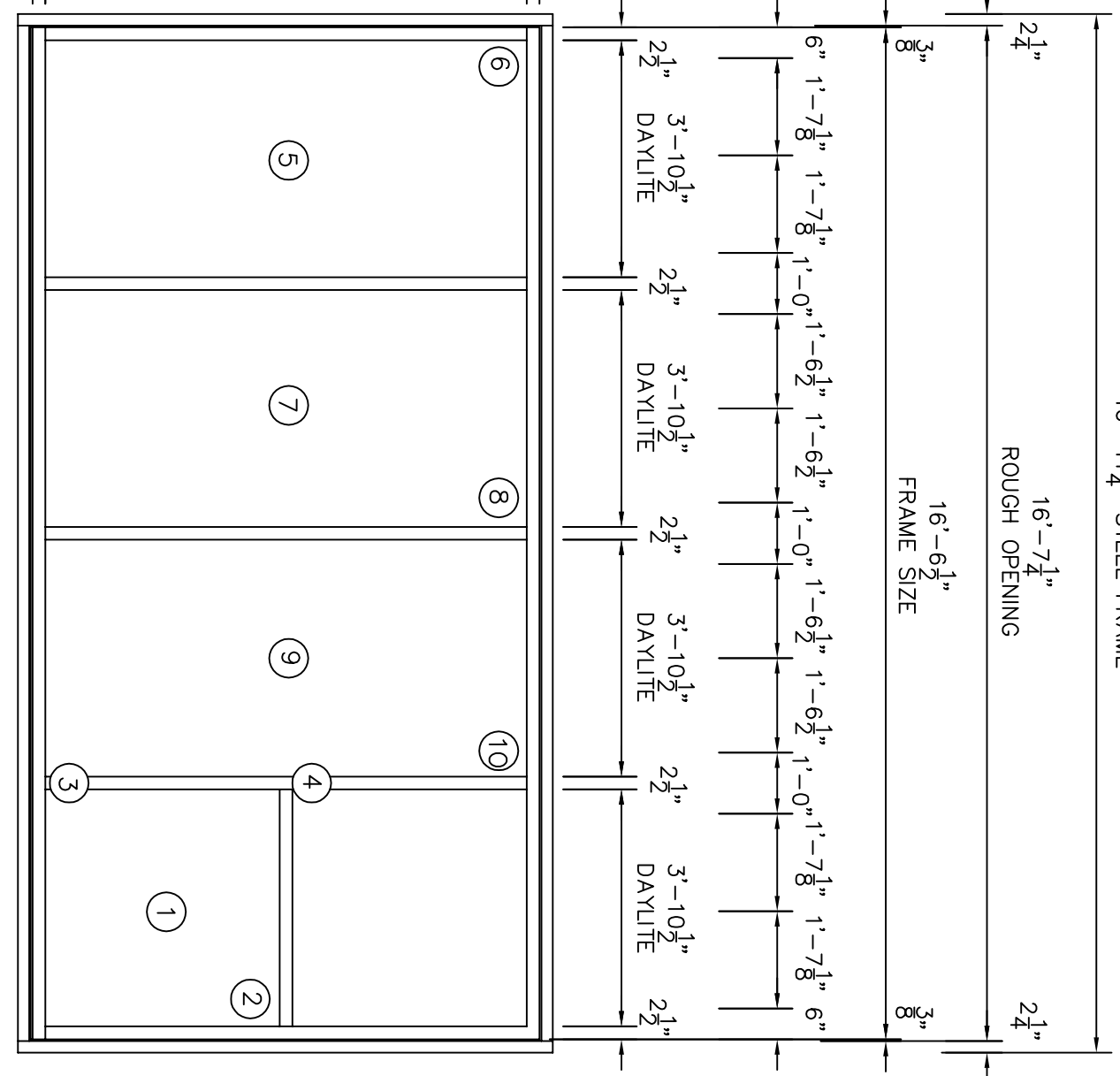
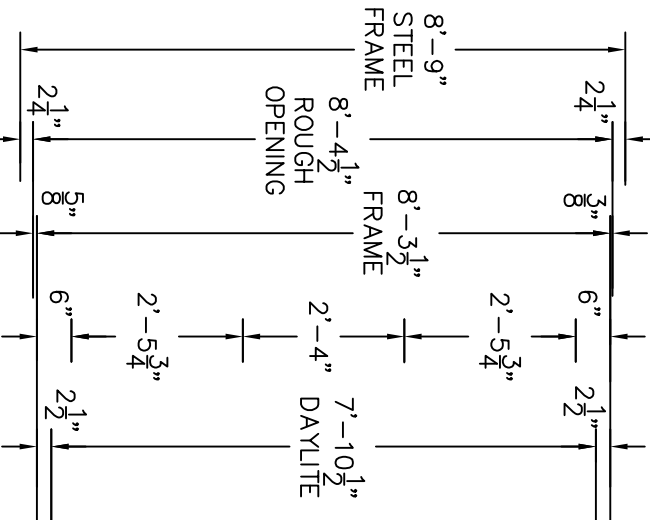
UNIT 'E' - (1) REQ'D.
 INSULGARD TH600 SERIES FRAMING
 w/ TORGARD NBR IG GLAZING
 FINISH: BRONZE / CLEAR ANODIZE

IMPACT	MISSILE	VELOCITY
1	2x4, 15#, 13'-6 1/2" MPH	54 MPH
2	2x4, 15#, 13'-6 1/2" MPH	54 MPH
3	2x4, 15#, 13'-6 1/2" MPH	54 MPH
4	2x4, 15#, 13'-6 1/2" MPH	54 MPH
5	2x4, 9#, 8'-0" MPH	54 MPH
6	2x4, 9#, 8'-0" MPH	54 MPH
7	2x4, 9#, 8'-0" MPH	54 MPH
8	2x4, 9#, 8'-0" MPH	54 MPH
9	2x4, 9#, 8'-0" MPH	54 MPH
10	2x4, 9#, 8'-0" MPH	54 MPH

16'-11 3/4" STEEL FRAME

16'-7 1/4" ROUGH OPENING

16'-6 1/2" FRAME SIZE

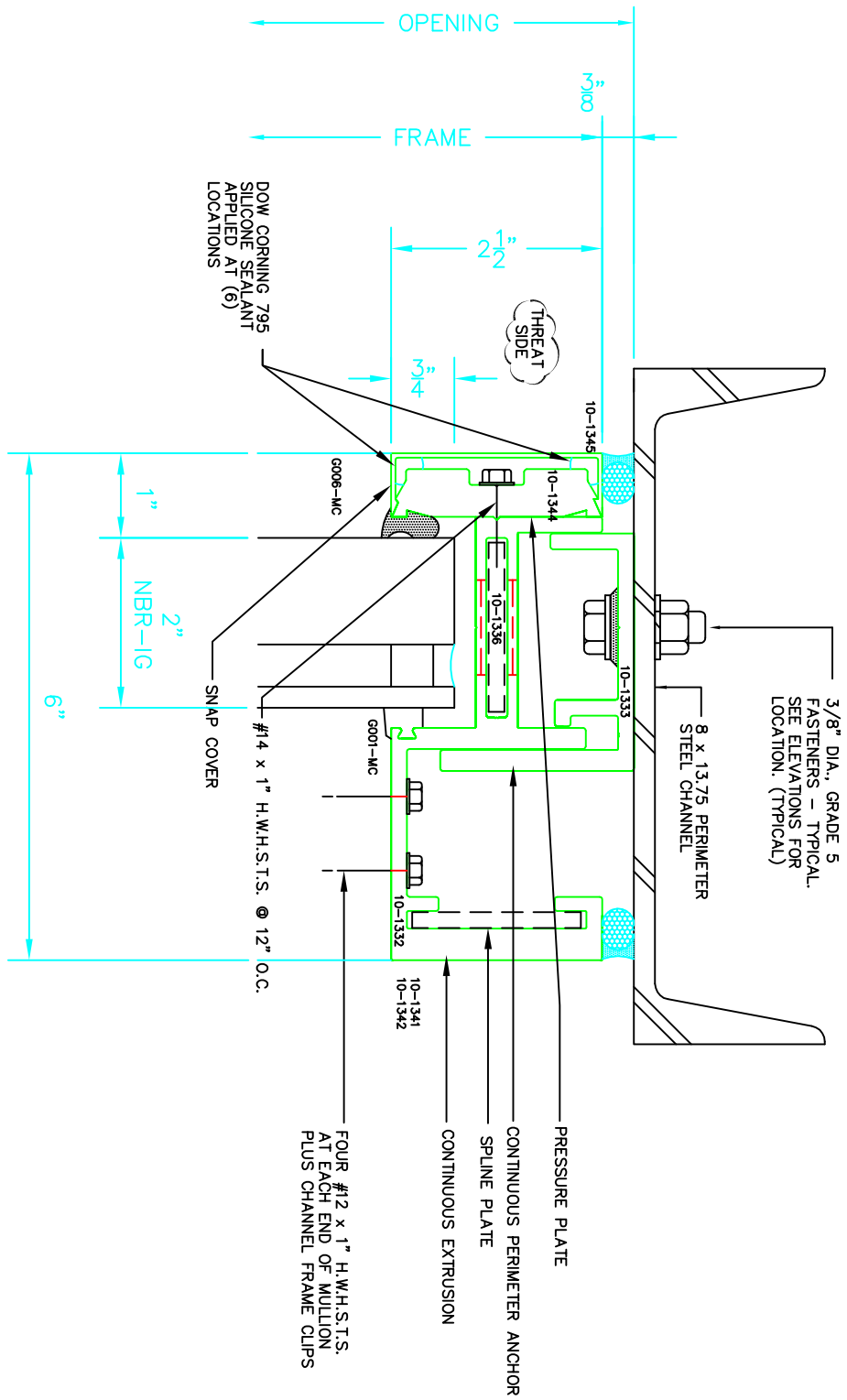


SCALE: 3/8" = 1'-0"
 DRAWN BY: DAVE A MIX
 DATE: AUG 19, 10
 REVISIONS: NO. DATE DESCRIPTION
 LOCATION:

ATI Test Frame 'E' - Elevation
 TORGARD NBR-IG GLAZING
 FEMA 361 (Missile Impact Locations)

SHEET NUMBER: E3 of 3
 JOB NUMBER:

DISCLAIMER: THE INFORMATION CONTAINED IN THIS DRAWING IS CONFIDENTIAL. IT IS THE EXCLUSIVE PROPERTY OF "INSULGARD". AUTHORIZED USE MUST BE APPROVED BY "INSULGARD". ANY UNAUTHORIZED REPRODUCTION AND/OR DISTRIBUTION IS PROHIBITED.



1 HEAD
D1 TH 600 FRAMING

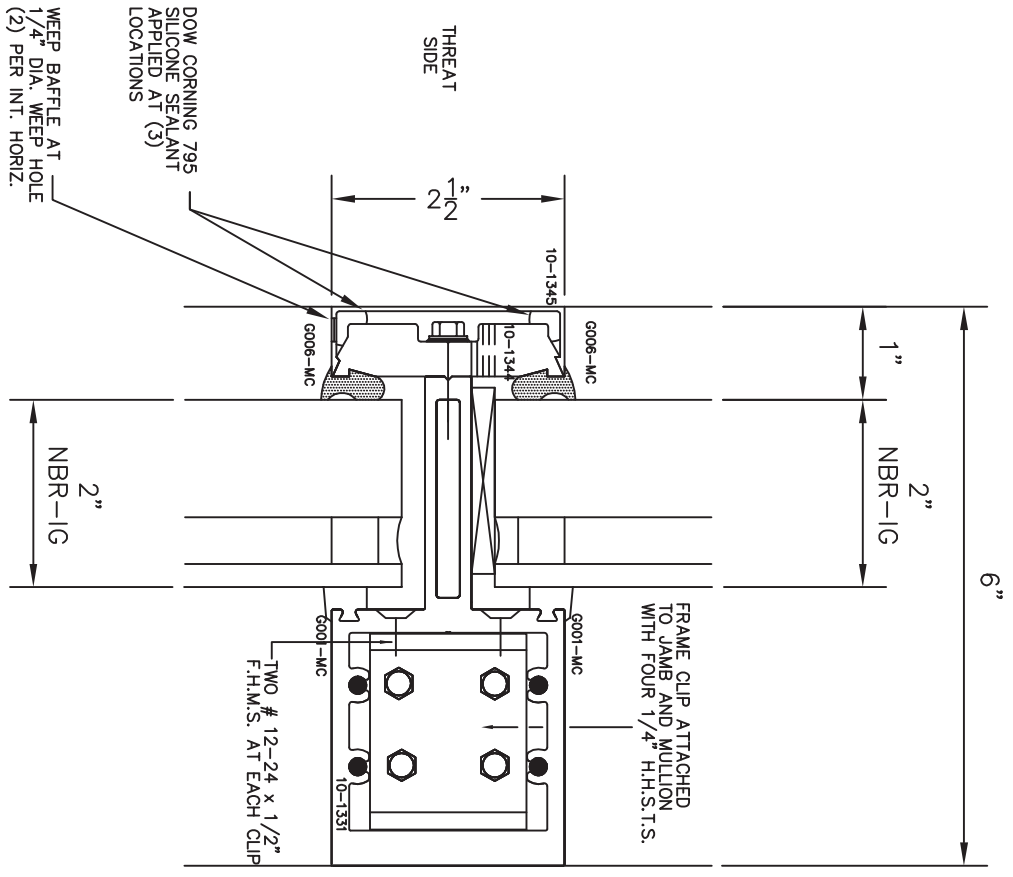


SCALE: 1/2 FULL SIZE	REVISIONS: NO. DATE DESCRIPTION
DRAWN BY: DAVE A MIX	
DATE: AUG 19, 10	LOCATION:

ATI Test Frame 'E' – Head
TORGARD NBR-IG GLAZING
FEMA 361

SHEET NUMBER:
D1 of 5
JOB NUMBER:

DISCLAIMER: THE INFORMATION CONTAINED IN THIS DRAWING IS CONFIDENTIAL. IT IS THE EXCLUSIVE PROPERTY OF "INSULGARD". AUTHORIZED USE MUST BE APPROVED BY "INSULGARD". ANY UNAUTHORIZED REPRODUCTION AND/OR DISTRIBUTION IS PROHIBITED.



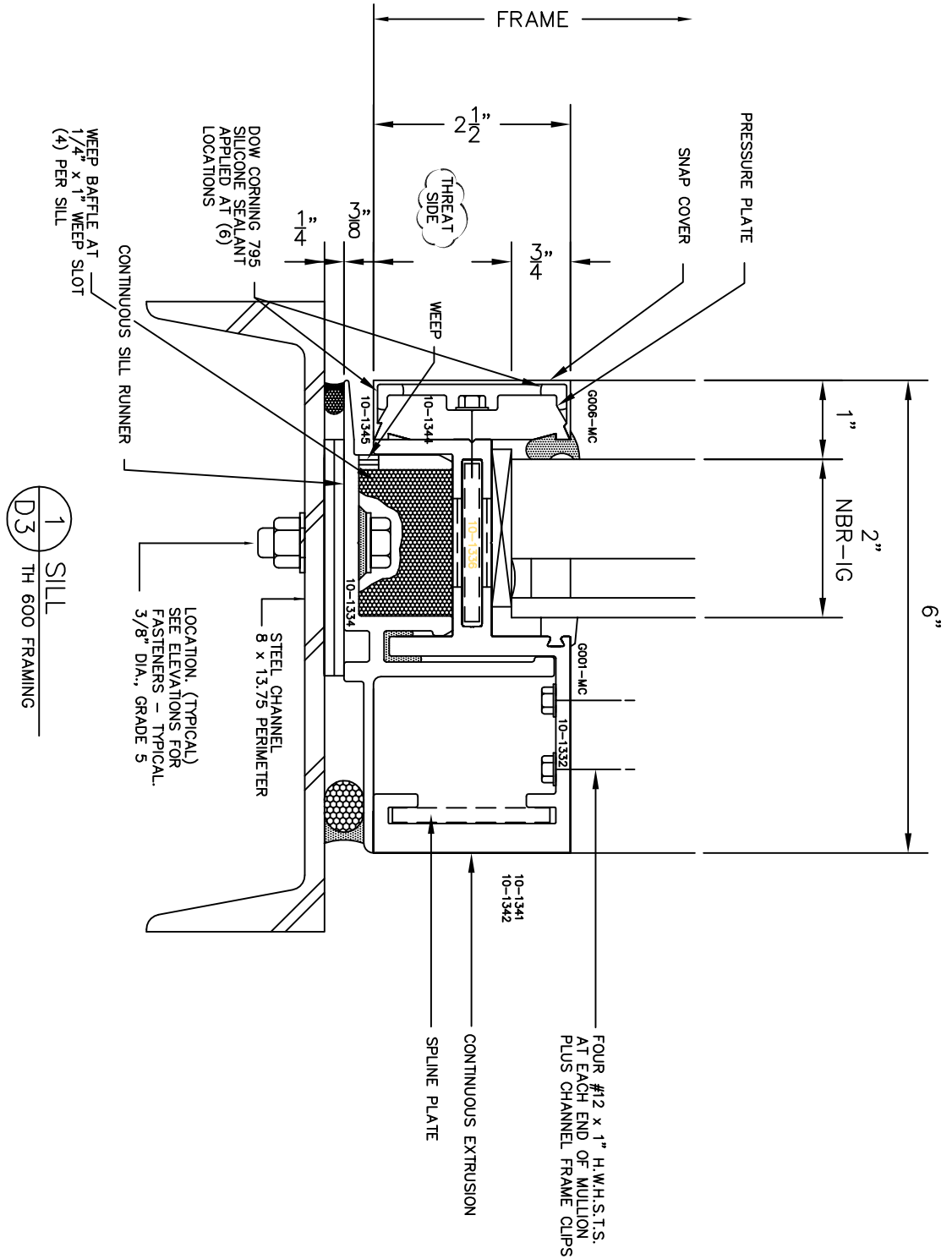
1 INT. HORIZONTAL
D2 TH 600 FRAMING



SCALE: 1/2 FULL SIZE	REVISIONS: NO. DATE DESCRIPTION
DRAWN BY: DAVE A MIX	
DATE: AUG 19, 10	LOCATION:

ATI Test Frame 'E' - Int. Horiz.
TORGARD NBR-IG GLAZING
FEMA 361

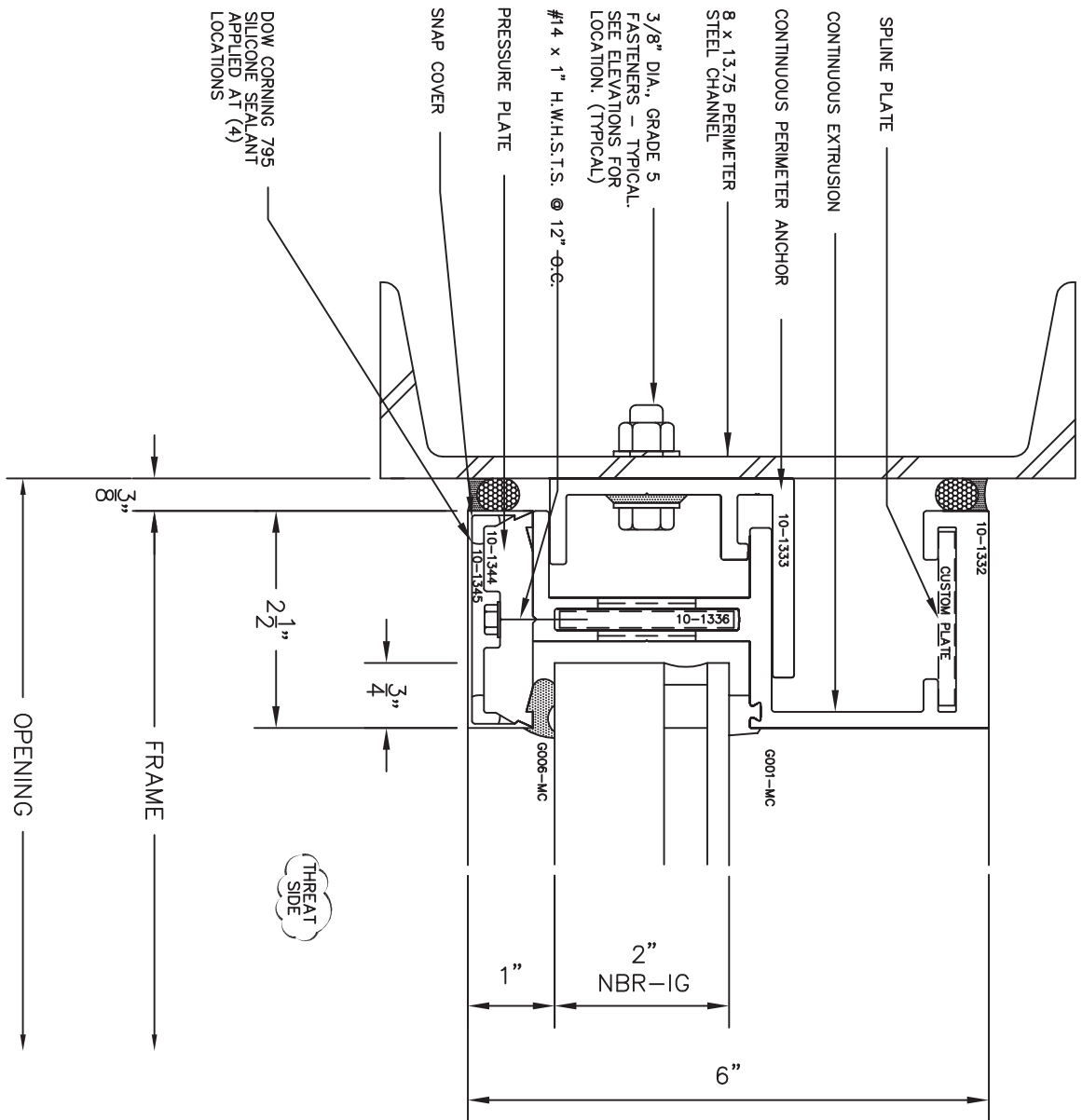
SHEET NUMBER:
D2 of 5
JOB NUMBER:



SCALE: 1/2 FULL SIZE	REVISIONS: NO. DATE DESCRIPTION
DRAWN BY: DAVE A MIX	
DATE: AUG 19, 10	LOCATION:

ATI Test Frame 'E' - Sill
 TORGARD NBR-IG GLAZING
 FEMA 361

SHEET NUMBER:
D3 of 5
JOB NUMBER:



DOW CORNING 795 SILICONE SEALANT APPLIED AT (4) LOCATIONS

3/8" DIA., GRADE 5 FASTENERS - TYPICAL. SEE ELEVATIONS FOR LOCATION. (TYPICAL)

#14 x 1" H.W.H.S.T.S. @ 12" O.C.

PRESSURE PLATE

SNAP COVER

SPLINE PLATE

CONTINUOUS EXTRUSION

CONTINUOUS PERIMETER ANCHOR

8 x 13/75 PERIMETER STEEL CHANNEL

10-1332

CUSTOM PLATE

G001-MC

2" NBR-IG

1"

6"

3/4"

3/8"

2 1/2"

3/16"

OPENING

FRAME

1 JAMB
D4 TH 600 FRAMING



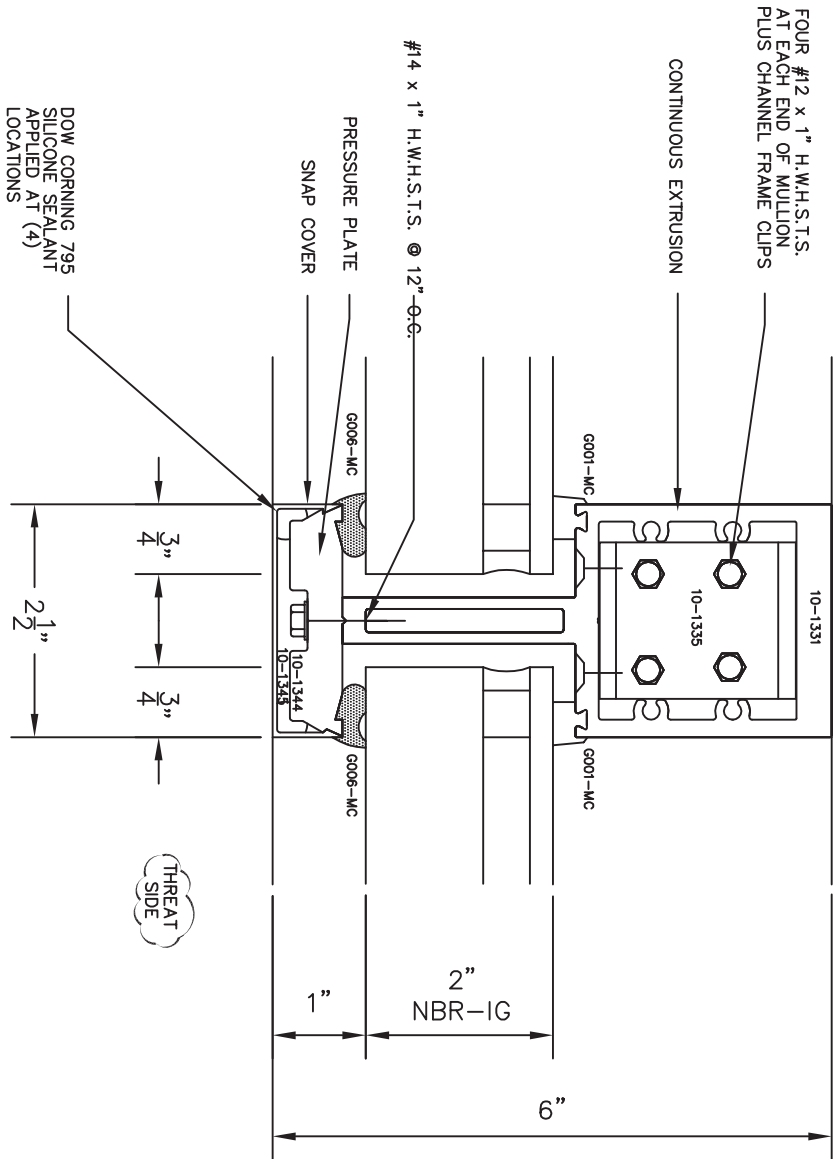
BULLET AND STORM RESISTANT SYSTEMS & MATERIALS

SCALE: 1/2 FULL SIZE
DRAWN BY: DAVE A MIX
DATE: AUG 19, 10

REVISIONS: NO. DATE DESCRIPTION
LOCATION:

ATI Test Frame 'E' - Jamb
TORGARD NBR-IG GLAZING
FEMA 361

SHEET NUMBER: D4 of 5
JOB NUMBER:



1 MULLION
 D5 TH 600 FRAMING



SCALE: 1/2 FULL SIZE	REVISIONS: NO. DATE DESCRIPTION
DRAWN BY: DAVE A MIX	
DATE: AUG 19, 10	LOCATION:

ATI Test Frame 'E' – Mullion
 TORGARD NBR-IG GLAZING
 FEMA 361

SHEET NUMBER:
D5 of 5
JOB NUMBER:

